



OFFLINE REFINITY

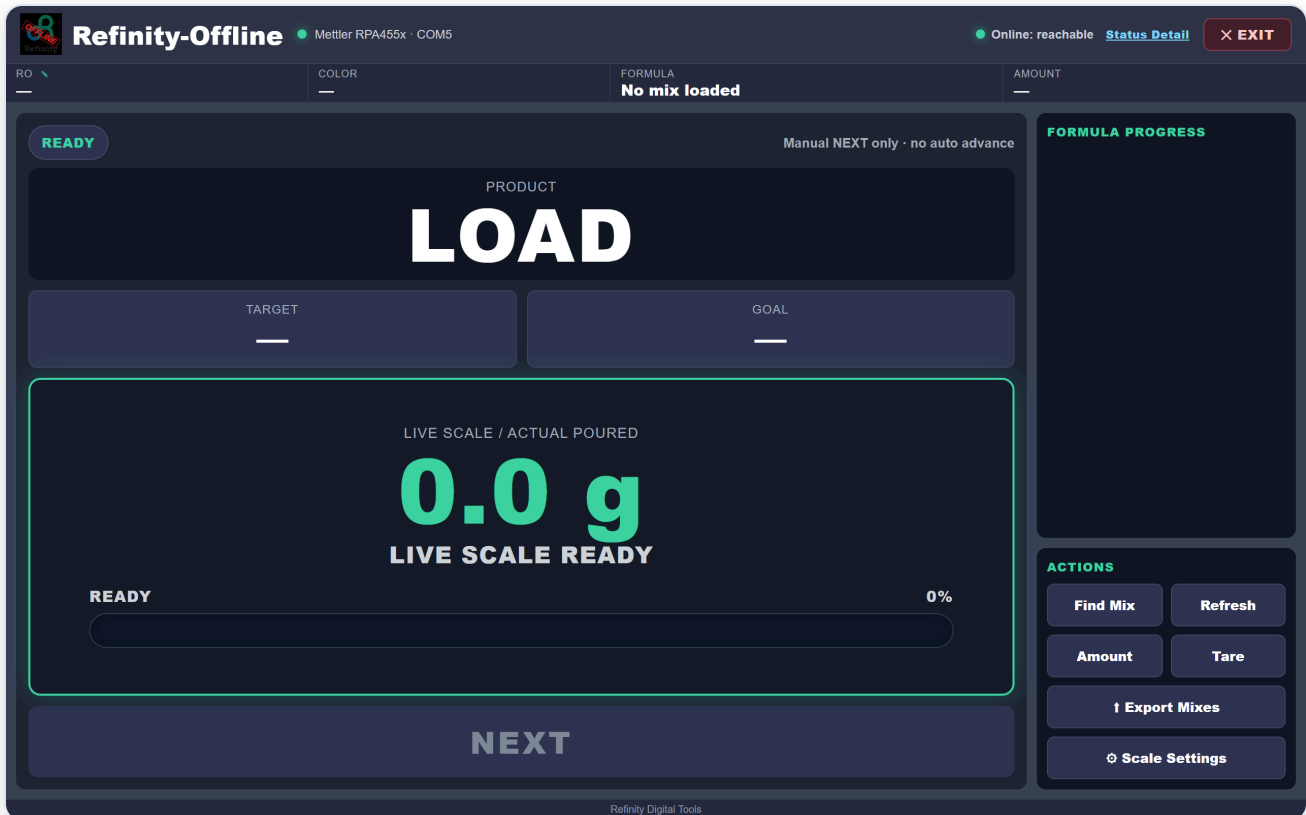
Shop-Floor Guide

Features · Install · Everyday Use

WHAT IT IS

Mix paint on the scale — even when you're offline

Refinity Offline runs right on the mixing-bench PC. It walks you through pouring any BASF formula on a connected scale, step by step — no internet or online Refinity needed.



The main mixing screen — live weight, targets, and pour progress.

Works offline

Keep mixing when the network or Refinity is down.

Live scale guidance

Real-time weight, targets, and a pour bar for every step.

Sartorius & Mettler

Both scales auto-detect and read live.

Nothing lost

Every mix is saved to export back to Refinity later.

Install & connect your scale

Install in under a minute

- 1 Run the installer** Double-click “Refinity-Offline Setup.exe”.
- 2 Click through** The scale’s USB driver installs automatically.
- 3 Open the shortcut** Launch from the “Refinity OFFLINE” desktop icon.
- 4 You’re in** It opens full-screen, ready to set up your scale.

Per-PC install — no separate server, no internet required.

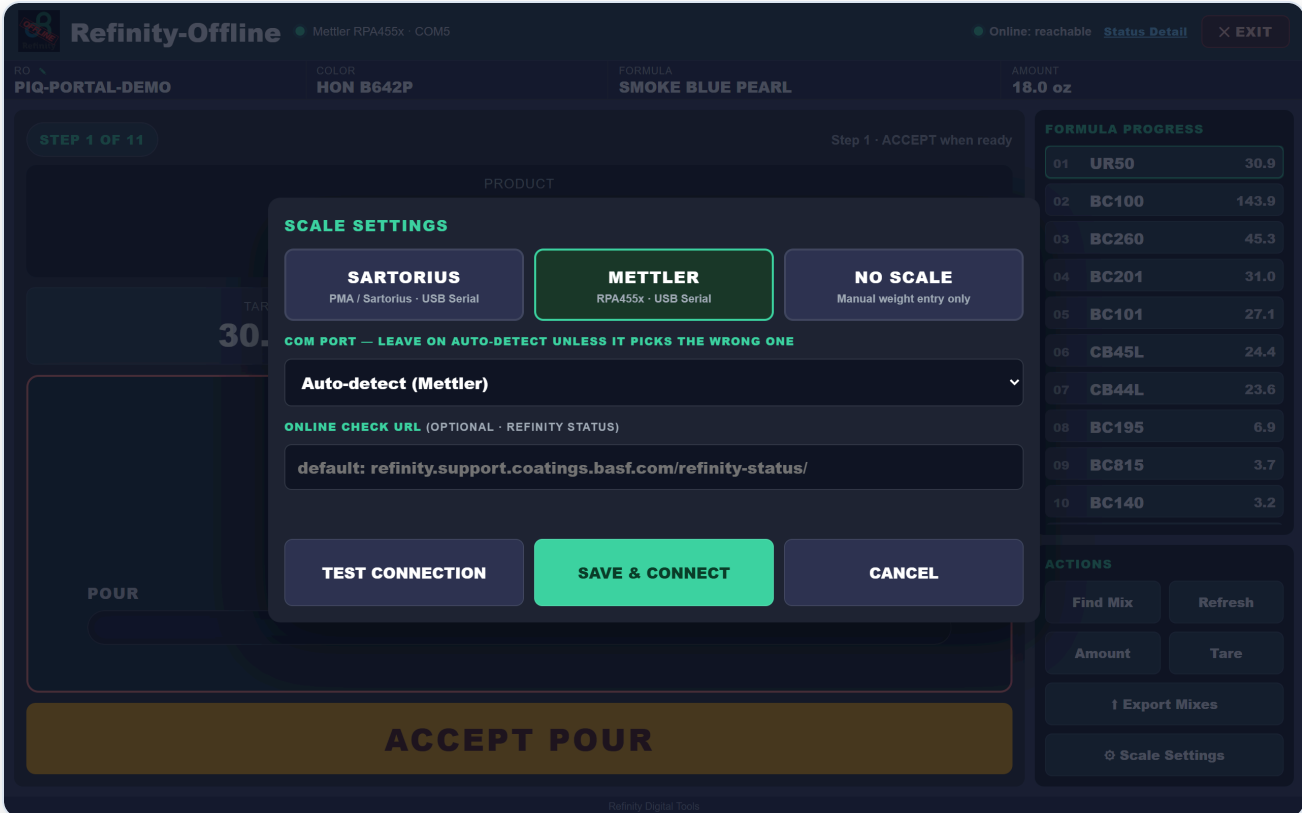
Connect your scale

- 1 Open Scale Settings** Tap ⚙ Scale Settings in the Actions panel.
- 2 Choose your scale** Sartorius (PMA) or Mettler.
- 3 Leave on Auto-detect** It finds the scale’s COM port for you.
- 4 Save & Connect** The status dot turns green — you’re live.

Not on the usual port? Pick it from the list — Test Connection confirms it.

The Scale Settings screen

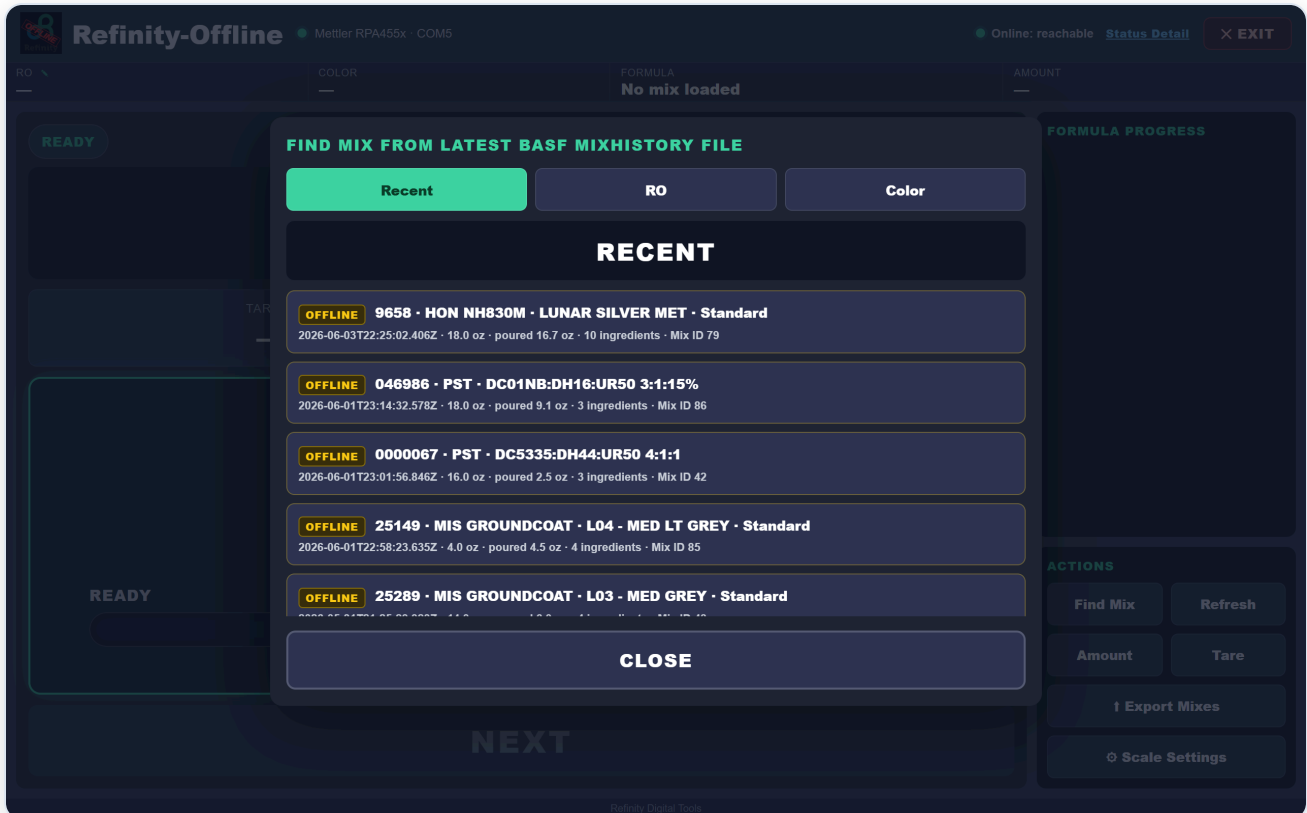
Pick your scale type and leave the COM Port on **Auto-detect**. Save & Connect — when the dot goes green, the live weight is reading.



Scale Settings — choose Sartorius or Mettler, then Auto-detect.

Find your mix

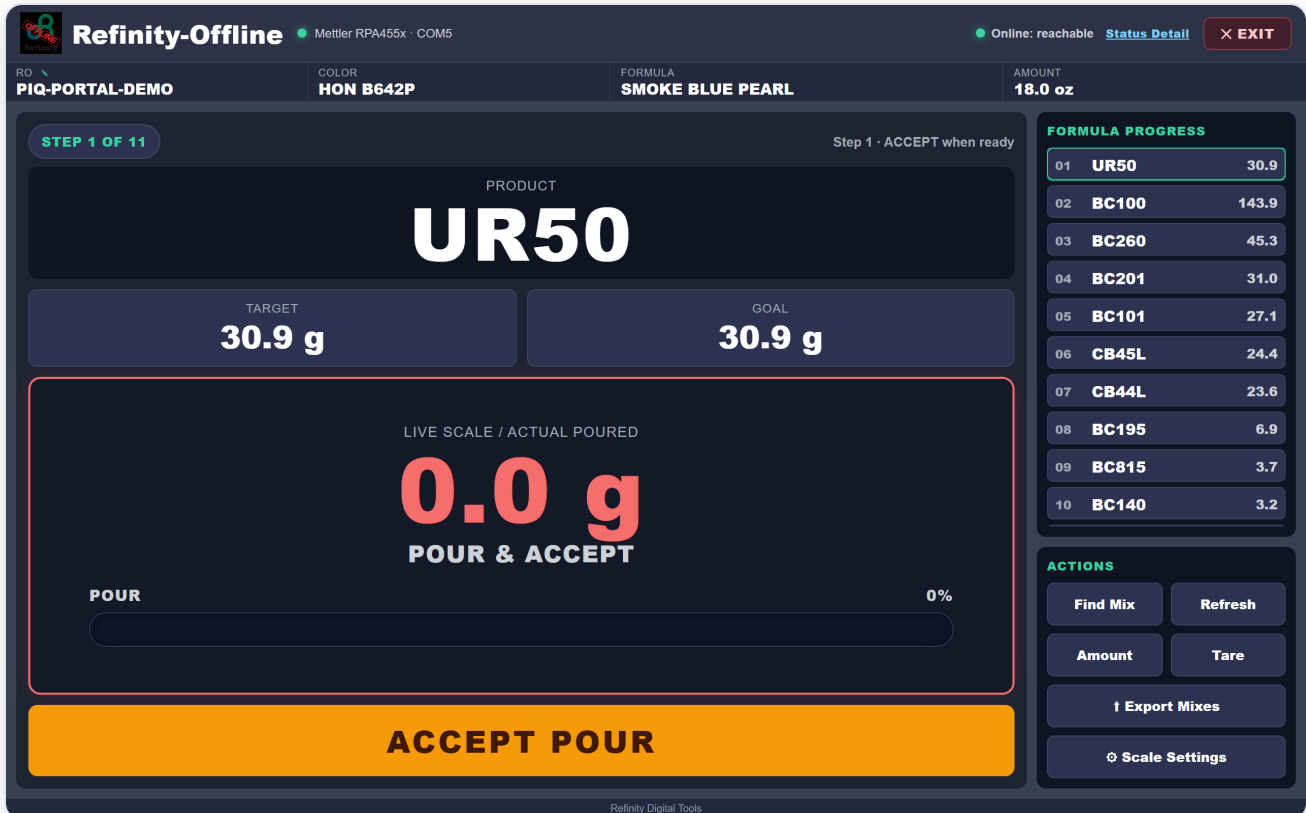
- 1 **Tap Find Mix** It's in the Actions panel.
- 2 **Search** By Recent, RO #, or Color.
- 3 **Pick the job** Your recent BASF mixes and your saved offline mixes are both here — look for the OFFLINE badge.



Find Mix — search Recent, RO, or Color; online and offline together.

Pour it, step by step

- 1 **Pour the first component** Hit its target, then tap ACCEPT POUR — this sets the batch size and scales the rest of the formula.
- 2 **Pour each component** The weight reads red → yellow → green as you approach the target.
- 3 **NEXT, then FINISH** Tap NEXT after each component; tap FINISH on the last one.



Each step shows the product, target, live weight, and pour bar.

Handy while you pour, then finish



Tare

Zero the scale or cup at any time.



Manual entry

Tap the weight to type a value — handy as a backup.



Amount

Resize the batch before you start pouring.



Over / Under

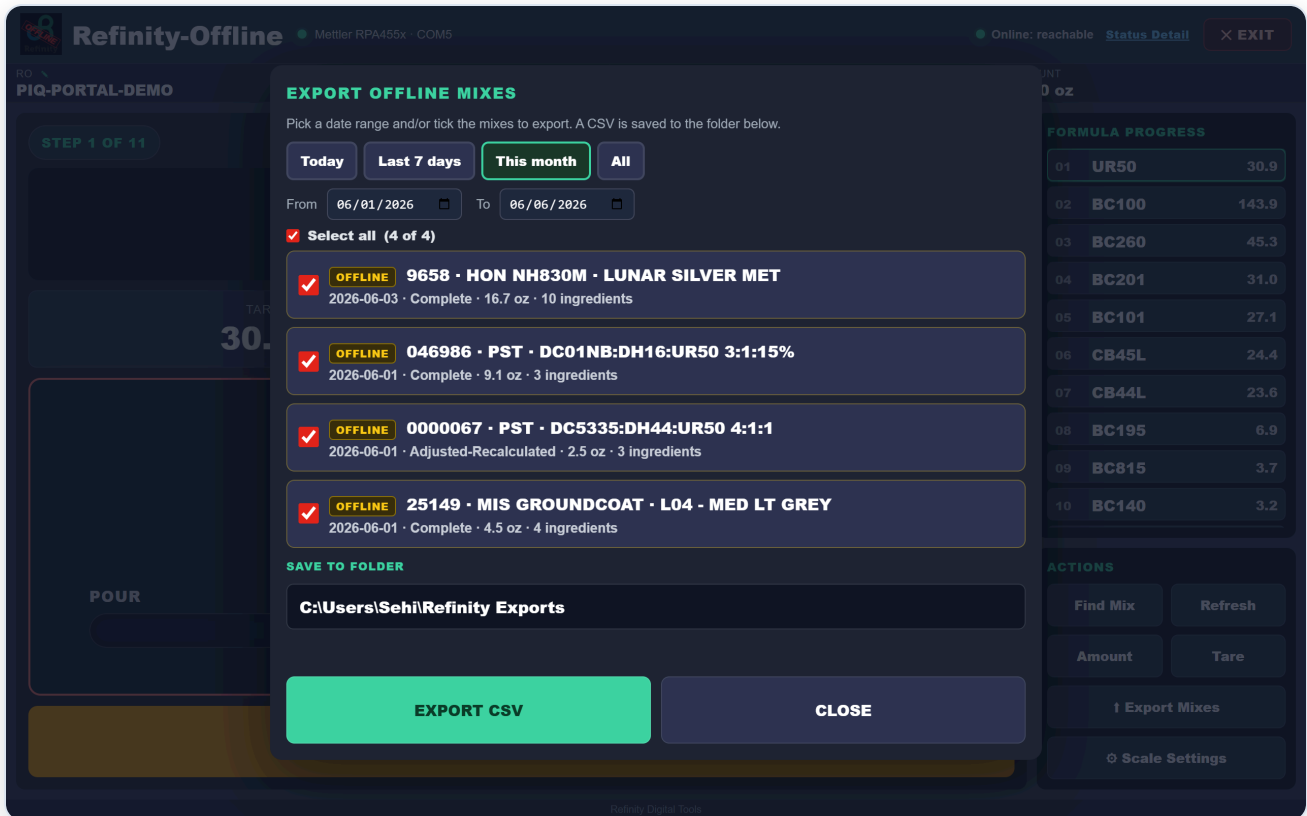
Pour too much? It recalculates the formula or adds a correction step automatically.

Finish & label

- 1 FINISH saves it** The job is stored locally with exactly what you poured.
- 2 Print a label** Send a can label to your printer in one tap.
- 3 Ready to export** It now lives under your offline mixes — set for later.

Send your offline mixes to Refinity




- 1 Tap **Export Mixes** In the Actions panel.
- 2 **Choose what to send** Pick a date range, or tick the mixes you want.
- 3 **Export CSV** Saved to your chosen folder.
- 4 **Into Refinity** Re-enter or import the file online.







Export Mixes — by date range or hand-picked, straight to a CSV.

Status light & quick fixes

The online status light

-  **Green** — Refinity is online and reachable.
-  **Yellow** — an incident is reported.
-  **Red** — can't reach Refinity. You can still mix offline.

Scale won't connect?

-  **1 Check the basics** USB cable seated and the scale powered on.
-  **2 Auto-detect** Scale Settings → leave on Auto-detect (or pick the COM port).
-  **3 Test Connection** Tap it to confirm.
-  **4 Green dot** Connected and reading live.

Tip: leave the COM Port on Auto-detect — it re-finds the scale even if Windows assigns a different port number.